

# KATHERINE RAY HANOVER

multimedia artist + designer

---

krhanover@gmail.com

| katherinehanover.com

FREELANCE + CONTRACT PROJECTS



# The Seedling Child Montessori School

---

(2018- present)

re-branding | graphic + web design







# The Seedling Child | Logo Design



The Seedling Child

MONTESSORI SCHOOL



The Seedling Child

MONTESSORI SCHOOL

P: (510) 521-5846

E: seedlingchild@yahoo.com

3183 Mecartney Road, Alameda, California 94502

The Seedling Child

MONTESSORI SCHOOL





## The Seedling Child | Outdoor Signage







# The Seedling Child | Brochure

## Parent Testimonials

“

*"We are thrilled with the education and care our son has received at The Seedling Child. Not only has he developed the ability to read, write and learn basic math concepts, more importantly, his creativity has been nurtured and enhanced while learning excellent basic life skills. Every child should be a Seedling Child; the world would grow to be a better place."*

- Margy and Dave

*"The Seedling Child has a balanced and stimulating environment that supports growth and development. We couldn't imagine a better environment for our three sons to start their academic careers."*

- Gayle and Ed

*"To us, The Seedling Child is a perfect balance of learning & exploration, infused with a lot of love and nurturing. The respect afforded to the children and their development is above that which I have seen at any other school. We would recommend The Seedling Child wholeheartedly to anyone."*

- Lisa and Dave

”

## Features

- Stimulating, enriching classroom
- Inviting, secured outdoor play yard
- Long term, experienced, and highly educated teaching staff
- Stable, well-established program, licensed since 1988
- Serving the community in a convenient location in Harbor Bay Isle
- Competitive tuition

## Program Highlights

- Five days per week schedule
- Ten-month academic year schedule
- Additional summer program available

## Hours

### Morning Program

8:45 - 9:00 am (drop off)  
Noon (pick up)

### Mid Day Program

8:45 - 9:00 am (drop off)  
1:00 pm (pick up)

### Extended Day Program

8:45 - 9:00 am (drop off)  
2:30 pm (pick up)

### Summer Program

8:45 - 9:00 am (drop off)  
1:00 pm (pick up)



## The Seedling Child

MONTESSORI SCHOOL

Let us help your  
seedling child grow.



CA Community Care Licensing Facility  
#013415259

3183 Mecartney Road  
Alameda, California 94502

(510) 521-5846

seedlingchild@yahoo.com

For questions or more information,  
please feel free to call the School:  
Monday – Friday, 8:00 am – 2:30 pm



# The Seedling Child | Brochure



## Our Story & Mission

The Seedling Child Montessori School was founded in 1988 by several parents committed to excellence in education for young children. The school is a non-profit corporation.

The name, "The Seedling Child," was chosen to reflect the importance of the child's first school experience and the nurturing and care essential for a spirit of positivity.

The Seedling Child exists to support children in their own natural growth process. We do this through a specially designed environment and with trained staff who understand and support this process.

Our program incorporates what we believe to be the best principles, practices, and materials available in current early childhood education. We provide an environment that satisfies the needs of the child's developing personality, and provide a curriculum that nurtures and facilitates growth during each stage of a child's development.

We believe each child is a unique, capable, creative individual who responds from an inner drive to know and understand the world. Our program embraces that goal.

The Seedling Child Montessori School is a very special environment, and we invite you and your child to grow and share with us on this journey.

## Programs

### Morning Program

- Designed for children three to five years of age
- Monday - Friday, 9:00 am to Noon
- Children choose from a wide variety of attractive materials in classroom centers as part of the daily curriculum
  - » Language arts: emerging literacy, reading, and handwriting
  - » Mathematics
  - » Science and geography
  - » Music and art
  - » Practical life, housekeeping, imaginary play
  - » Games and puzzles
  - » Sensory materials
  - » Manipulatives and building materials
  - » Outdoor play
- Enrichment activities: science, cooking, group art projects, language, and perceptual motor fitness activities

### Mid Day Program

- Designed for children three to five years of age
- Monday - Friday, 9:00 am to 1:00 pm
- Children participate in the Morning Program, then stay for an additional hour for lunch and curriculum activities.

### Extended Day Program

- Designed for children four to five years of age
- Monday - Friday, 9:00 am to 2:30 pm
- Children participate in the Morning Program, and continue to attend for lunch. Lunchtime is followed by curriculum activities until 1:00 pm then children have teacher-directed kindergarten readiness skills until 2:30 pm.
- Skills include the following:
  - » Mathematics
  - » Individualized reading
  - » Language arts
  - » Handwriting

### Summer Program

- Designed for children three to six years of age
- Monday - Friday, 9:00 am to 1:00 pm
- Theme-based, one-week sessions offered during the months of June and/or July
- Special projects enhance themed experience

## Statement of Nondiscriminatory Policy

The Seedling Child Montessori School admits students of any race, color, creed, gender, national and ethnic origin, and disability status to all the rights, privileges, programs, and activities generally accorded or made available to students at the School. It does not discriminate on the basis of race, color, creed, gender, national and ethnic origin, and disability status in administration of its educational policies, admissions policies, and School-administered programs.



The Seedling Child Website | [www.theseedlingchild.com](http://www.theseedlingchild.com)

The Seedling Child  
MONTESSORI SCHOOL

HOME OUR STORY PROGRAMS STAFF CONTACT

INTERIOR  
Restorations

MODERN FLOORING  
FRESH PAINT  
RESTORED FURNITURE  
OPEN CONCEPT ROOM LAYOUT



NOW ENROLLING FOR

2021-2022  
Academic Year!

For questions or more information:

(510) 521-5846 | [seedlingchild@yahoo.com](mailto:seedlingchild@yahoo.com)

\*Information about **Fall 2022 Academic Year** will be released Sept/Oct 2021





## The Seedling Child MONTESSORI SCHOOL

[HOME](#) [OUR STORY](#) [PROGRAMS](#) [STAFF](#) [CONTACT](#)

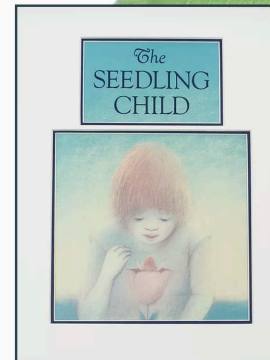
### OUR STORY

The Seedling Child Montessori School is a non-profit corporation and was founded in 1988 by several parents committed to excellence in education for young children. The Seedling Child is a non-profit corporation. The name, "The Seedling Child," was chosen to reflect the importance of the child's first school experience as well as the nurturing and care essential for a spirit of positivity.

The Seedling Child exists to support children in their own natural growth process. We do this through a specially designed environment and with trained staff who understand and support this valuable process.

Our Program incorporates what we believe to be the best principles, practices, and materials available in current early childhood education. We provide an environment that satisfies the needs of the child's developing personality, and provide a curriculum that nurtures and facilitates growth during each stage of a child's development.

We believe each child is a unique, capable, creative individual who responds from an inner drive to know and understand the world. Our Program embraces that goal. The Seedling Child Montessori School is a very special environment, and we invite you and your child to grow and share with us on this journey.



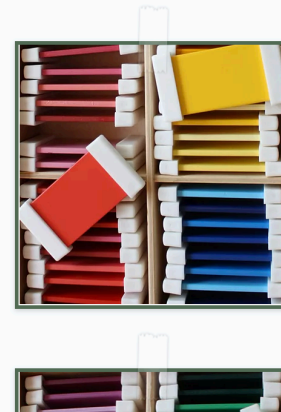
### PHILOSOPHY & MISSION STATEMENT

The Seedling Child was originally established as a traditional Montessori program. Dr. Maria Montessori (1870-1951) was a physician, scientist, educator, and the first woman to receive a medical degree in Italy. Dr. Montessori discovered, through patient observation, various qualities unique to the child. Perhaps the most important of these include:

- The benefit of a specially prepared environment.
- The expansive nature of the child's mind.
- The sensitive periods during which a child can learn specific things more readily than at any other time in his or her life.

With these attributes in mind, Dr. Montessori created a "prepared environment": a learning center filled with attractive and self-correcting materials in reading, math, art, science, practical life, and sensorial. She designed materials that were enjoyable, attractive and inviting to use. These materials fostered independence, trained the senses, and developed a continuity of effort and love of learning.

While honoring Montessori's vision and philosophy, our Program is constantly evolving and incorporates what we believe to be the best principles and materials available in current early childhood education. In our classroom children are encouraged to grow at their own pace in a stimulating, creative atmosphere.





## The Seedling Child MONTESSORI SCHOOL

[HOME](#) [OUR STORY](#) [PROGRAMS](#) [STAFF](#) [CONTACT](#)

### PROGRAMS

"Let us help your seedling child grow."



Five days per week schedule



Eleven-month  
academic year schedule



Low student to teacher ratio:  
offers individualized learning  
opportunities for each child

### MORNING PROGRAM



#### Morning Program Description:

- Designed for children 3 to 5 years of age
- Monday - Friday, 9:00 am to 1:00 pm

#### Skills include the following:

- Language arts: emerging literacy, reading, and handwriting
- Mathematics



# The Seedling Child

MONTESSORI SCHOOL

- HOME
- OUR STORY
- PROGRAMS
- STAFF
- CONTACT

**The Seedling Child Montessori School**  
3183 Mecartney Rd, Alameda, CA 94502, USA  
[Directions](#)

## CONTACT US

**The Seedling Child Montessori School**

3183 Mecartney Road  
Alameda, California 94502

**For questions or more information:**

(510) 521-5846

[seedlingchild@yahoo.com](mailto:seedlingchild@yahoo.com)

**School hours:** Monday- Friday, 8:00am-2:30pm

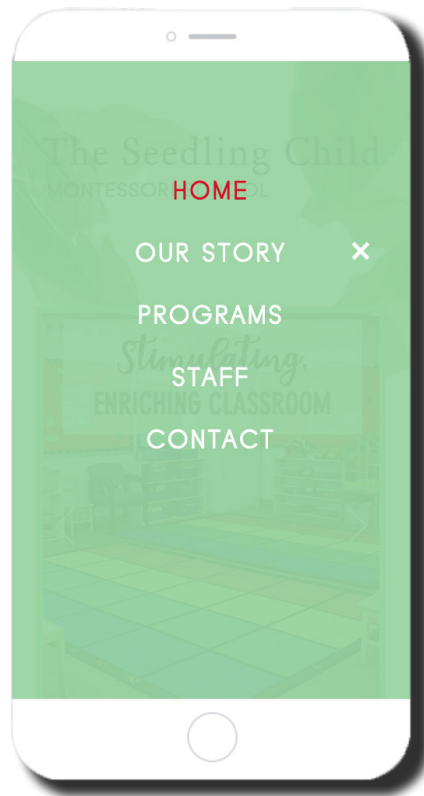
**CA Community Care Licensing Facility**  
#013415259

© Seedling Child, Inc. 2021





# The Seedling Child Website | Mobile





# Bay Area Trauma Education Consortium

---

*Totally Trauma* Virtual Conference 2021

(March 2021 - present)

re-branding | graphic design



● *Totally Trauma 2021* | Logo Design



● Totally Trauma 2021 | Flyer Design





# ● *Totally Trauma 2021* | Conference Brochure



 TRAUMA  
EDUCATION  
CONSORTIUM

**TOTALLY TRAUMA 2021**

Alameda Health System- Highland Hospital  
John Muir Medical Center- Walnut Creek Campus  
MarinHealth Medical Center  
Natividad Medical Center- Salinas  
Regional Medical Center of San Jose  
Santa Clara Valley Medical Center  
Stanford Healthcare- Stanford Medicine  
Stanford Children's Health  
Sutter Health- Eden Medical Center  
UCSF Benioff Children's Hospital Oakland  
Zuckerberg San Francisco General Hospital and Trauma Center



 **TEC** is going green!  
Please consider the  
environment before printing.

**32<sup>ND</sup> ANNUAL**  
*Totally Trauma*

**BAY AREA  
TRAUMA EDUCATION  
CONSORTIUM**

**VIRTUAL  
CONFERENCE**

OCTOBER 20th & 21st, 2021

[www.tecba.org](http://www.tecba.org)

NEAR  
&  
FAR

# ● Totally Trauma 2021 | Conference Brochure

## CONFERENCE REGISTRATION

TOTALLY TRAUMA, October 20th & 21st, 2021

ONLINE REGISTRATION — [www.tecba.org](http://www.tecba.org)

REGISTRATION FEE \$120

### T-SHIRTS

If you are associated with or close to a TEC hospital, t-shirts will be distributed to a designated TEC Representative at each TEC hospital. Alternatively, there is a \$20 mailing fee for direct shipping.

### REFUND POLICY

A full refund will be given if a written notice of cancellation is received by October 19, 2021.

## MORNIN' BREW



Grab your coffee mug, fill it to the top, and get comfy. We are brewing up a BIG batch of self-care to get you centered. Janet Childs is a Bay Area CISM, Critical Incident Stress Management expert. She has worked for over 37 years to help support professionals in frontline jobs who experience repeated trauma, illness, and grief. Especially now, in the face of the COVID-19 pandemic, it is critical to get you, our frontline workers, support. Too often we see traumatized caregivers turn inward, choosing not to seek help for any number of reasons. In this 30 minute session, we will talk about how you start to unpack the emotional baggage that your profession brings. We will highlight ways to get help access resources, but most importantly, we want you to know that you are not alone in your feelings. Due to the sensitive nature of the information being shared, this will only be a live event and will not be recorded. We can't wait to see you at our **Mornin' Brew** featured on **Thursday, October 21st from 0700 to 0730.**

## TRAUMA AFTER DARK

Totally Trauma has always been filled with enjoyment. From the Lake Tahoe Wacky Ski Races to Escape by the Sea or Wine Country, we have always found time to keep fun and laughs woven into our education! In remaining close to our traditions, we invite you to travel with us (drink in hand) on our virtual journey and experience **Trauma After Dark.**

Our Bay Area Trauma Centers have compiled a panel of trauma experts, that will debate and share historic and somewhat hilarious moments that a career in trauma provides. Answers to questions like: HOW MUCH BLOOD did you give?!? A code grey for WHAT?!? And several others will be discussed. These events showcase effective and top-notch care that our teams deliver while under immense pressure. What many don't realize is that these inspiring events add weight to our "emotional backpacks" and we end up carrying that emotional trauma with us. When we are constantly under stress -it begins to wear on us and can often manifest itself in negative ways. The first step of healing is connecting with people that understand these stressors. Being able to talk about these stories, laugh, swap stories, shed a tear, and maybe even a virtual hug can really help to heal.

On **Wednesday, October 20th from 1730 to 1930** we invite you to join us for the reinvention of the original TEC "Wine and Cheese" event ... this year reimagined as, **Trauma After Dark.** Confidentiality is key, for this reason only live participants will share during this Totally Trauma Event. **It will not be recorded-** so join us on Zoom Live (link will be provided closer to the event).

This is a class that will not be easily forgotten! Join us for some fun, games, and release of a tough year of baggage- as only we can relate to.





# Totally Trauma 2021 | Conference Brochure

## PROGRAM: TOTALLY TRAUMA

### DAY 1

**DAY 1:** Wednesday, October 20, 2021

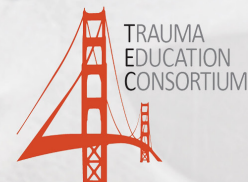
7:50 am	<b>Welcome</b> <i>President Name and Title</i>
8:00 am	<b>Presentation Title</b> <i>Speaker Name and Title</i>
8:45 am	<b>Presentation Title</b> <i>Speaker Name and Title</i>
9:30 am	<b>TEC Pearls Speaker</b>
9:40 am - 10:00 am	<b>Break / Vendors</b>
10:00 am	<b>TEC Pearls Speaker</b>
10:10 am	<b>Presentation Title</b> <i>Speaker Name and Title</i>
10:55 am	<b>TEC Pearls Speaker</b>
11:05 am	<b>Presentation Title</b> <i>Speaker Name and Title</i>
11:50 am	<b>TEC Pearls Speaker</b>
12:00 am - 1:00 pm	<b>Lunch Break</b>
1:00 pm	<b>Presentation Title</b> <i>Speaker Name and Title</i>
2:30 pm	<b>TEC Pearls Speaker</b>
2:40 pm - 3:00 pm	<b>Break</b>
3:00 pm	<b>TEC Pearls Speaker</b>
3:10 pm	<b>Presentation Title</b> <i>Speaker Name and Title</i>
3:55 pm	<b>Presentation Title</b> <i>Speaker Name and Title</i>
4:40 pm	<b>TEC Pearls Speaker</b>
4:50 pm	<b>Closing Comments</b> <i>President Name and Title</i>

## PROGRAM: TOTALLY TRAUMA

### DAY 2

**DAY 2:** Thursday, October 21, 2021

7:50 am	<b>Welcome</b> <i>President Name and Title</i>
8:00 am	<b>Presentation Title</b> <i>Speaker Name and Title</i>
8:45 am	<b>Presentation Title</b> <i>Speaker Name and Title</i>
9:30 am	<b>TEC Pearls Speaker</b>
9:40 am - 10:00 am	<b>Break / Vendors</b>
10:00 am	<b>TEC Pearls Speaker</b>
10:10 am	<b>Presentation Title</b> <i>Speaker Name and Title</i>
10:55 am	<b>TEC Pearls Speaker</b>
11:05 am	<b>Presentation Title</b> <i>Speaker Name and Title</i>
11:50 am	<b>TEC Pearls Speaker</b>
12:00 am - 12:30 pm	<b>Closing Comments/Grand Prize Drawing</b> <i>President Name and Title</i>



TOTALLY TRAUMA 2021  
BAY AREA TRAUMA EDUCATION CONSORTIUM



# Totally Trauma 2021 | Conference Brochure

## WHAT IS TEC?

The Bay Area Trauma Education Consortium (TEC) consists of Trauma Program Managers, Clinical Nurse Specialists, Nursing Educators, and Injury Prevention Coordinators from the San Francisco Bay Area Trauma Centers: Alameda Health System- Highland Hospital, John Muir Medical Center- Walnut Creek Campus, MarinHealth Medical Center, Natividad Medical Center, Regional Medical Center of San Jose, Santa Clara Valley Medical Center, Stanford Healthcare- Stanford Medicine, Stanford Children's Health, Sutter Health- Eden Medical Center, UCSF Benioff Children's Hospital Oakland, and Zuckerberg San Francisco General Hospital and Trauma Center. Our non-profit organization has presented affordable, quality trauma education since 1986.

## COURSE OVERVIEW

The challenges of providing quality trauma care have been amplified over the past year and a half. Trauma providers are expected to have advanced knowledge and skills in diagnosis, treatment and on-going management. The goal of TEC's Totally Trauma Conference is to present the most current clinical information available about the care of the injured patient. To meet this goal, we have coordinated an outstanding program with faculty who are providing frontline care. This dynamic conference will address cutting edge trauma care issues.

## TARGET AUDIENCE

This course is designed for nurses, prehospital personnel, advanced practice nurses and allied health professionals.

## CONTINUING EDUCATION

Provider approved by the California Board of Registered Nursing, CEP 9916, for 12 contact hours.

This course has been approved for 12 hours of Category 1 EMT-P Continuing Education by California EMT-P CE Provider 43-4001.

Stanford Health Care Department of Rehabilitation is an approved provider for physical therapy, occupational therapy, and speech language pathology for courses that meet the requirements set forth by the respective Boards. Approved contact hours: 12.

## OBJECTIVES

**At the conclusion of this program the participants will be able to:**

1. Discuss the current management and complications related to specific populations of trauma.
2. Describe three priorities when caring for the traumatically injured patient.
3. Identify key points learned from cases in trauma and how these impact practice.



**FOR MORE INFORMATION  
PLEASE VISIT OUR WEBSITE:**

[www.tecba.org](http://www.tecba.org)

# UCSF Benioff Children's Hospital in Oakland

---

## Emergency Department Brochure

(2019)

graphic design



### Important information for parents and guardians

- Please check in with the triage nurse **as soon as you arrive** at the Emergency Department.
- After seeing the triage nurse, **your child must be registered**. Please wait to be called to the Registration Station. In some cases, a child may also be registered inside the Emergency Department.
- The **order that patients are seen** is based on the severity of their illness or injury along with the order in which they arrived.
- **If your child's condition gets worse** while you are waiting in the lobby, alert the triage nurse immediately.
- Your child should **avoid food and drink** while waiting. Children with open wounds or possible broken bones may need a medicine or procedure that requires an empty stomach. Allowing your child to eat or drink may delay your child's treatment.
- One parent or guardian must **stay with the child** at all times in the ED. A maximum of two adult visitors are allowed with each patient in the exam room.

#### *At UCSF Benioff Children's Hospital Oakland, you play an important part in your child's care.*

Our staff is highly trained in caring specifically for kids. But you know your child better than anyone, and you may need to make important decisions about their care.

If there is anything you do not understand about your child's care, please ask questions.

We want to make sure the plan of care is clear to you and that we have addressed any concerns you might have.

### Helping your child cope with emergency care

Coming to the Emergency Department can be scary and stressful for a child. Many children express their fear and anxiety through:

- Withdrawal or unwillingness to cooperate
- Crying and screaming
- Name-calling, hitting or biting

These behaviors are not unusual in times of stress.

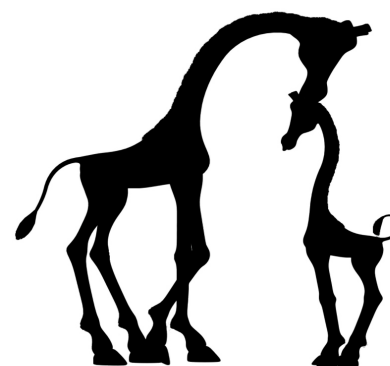
#### *Calming and comforting your child*

- **Be honest.** If a procedure is going to hurt, let your child know gently but truthfully. It is all right to be frightened and to cry.
- **Remain calm and comforting.** Children often remain calm if their parents do.
- **Stroke your child's head or hold their hand.** If your child must be held down for a procedure, reassure them of their safety.
- **Make eye contact.** Let your child see that you are close by.
- If your child resorts to name calling or hitting, correct the behavior but stay focused on being reassuring.
- Take all other children out of the room.
- In some cases, it may be best for parents to leave the room temporarily during a procedure to enable the medical team to work.
- After a procedure, comfort your child and praise them for their bravery.

#### *If you need help*

We are committed to caring for your whole family—including you. If you are feeling overwhelmed or cannot comfort your child, please ask for help. We will do all we can to provide the best care possible.

## Welcome to the Emergency Department



### Family & Patient Guide

*We understand that this may be a stressful and worrisome time.*



## The Emergency Department

UCSF Benioff Children's Hospital Oakland Emergency Department is Northern California's largest and most advanced Level I Trauma Center just for kids.

Our highly trained staff includes specialized physicians, pediatric surgeons and expert nurses, as well as critical care technicians, respiratory therapists and support staff dedicated to providing your child with the best medical care possible. In addition, our child life and social workers are available to help meet your family's particular needs.

Interpretive Services are available at all times to assist with communication.

### What order are patients seen in the Emergency Department?

A registered nurse with special training called a **triage nurse**, screens all patients when they first arrive for severity of illness or injury. This person evaluates each patient and gives the highest priority to patients who have life threatening emergencies.

**If your child's condition gets worse while you are waiting, please alert the triage nurse immediately.**

### Why do you have to register?

Registration staff ensures that we have your child's complete and accurate demographic information. You may have answered the questions asked at registration during a previous hospital visit. However, each time you come to the hospital, we must verify that your information in our system is up to date. Accurate information allows us to reach you after discharge.

### How long will the wait be?

We can't predict how busy the Emergency Department will be on any given day, or what other cases our staff will be caring for while you are here. We want to help your child as soon as possible, but we are sometimes treating critical patients and you may have to wait. Our nurses and physicians regularly reevaluate the priority of waiting patients. They make every effort to care for you and your child as soon as possible.

### What happens once your family is called to be seen?

Emergency Department staff will call you from the lobby to an exam room. It is recommended that children have at least one parent or guardian with them at all times. Once you are in an exam room, our nurses and physicians will continue their assessment and discuss the treatment plan with you. They may also perform diagnostic tests. Please keep in mind that our staff must also continue to evaluate other Emergency Department patients, and this may cause waiting during those times.

### Why are there so many people involved in your care?

Children's Hospital is a teaching hospital, which means that many different physicians will be involved in your child's care. A **resident** physician is usually the first doctor to evaluate your child. Residents are licensed, practicing doctors who are in training for advanced specialties. Residents are supervised by an **attending** physician, who will also evaluate your child. In addition, your child will be seen by one or more nurses, and in some cases by other professional caregivers.

All of these professionals work together to provide your child with the best care possible. If it seems overwhelming, or you are not sure exactly what a particular staff member is doing, **please ask** questions.

### What happens when it's time to go home?

When your doctor determines you are ready to go home, discharge instructions will be written. A nurse will make sure you understand your child's diagnosis and will explain any necessary medications and home care.

If the emergency physician recommends follow-up care with a specialist, your health plan may require you to have the referral approved by your child's regular doctor.

The Emergency Department team may decide to admit your child to the hospital to continue necessary diagnosis and treatment for their illness or injury. We recognize that admission to the hospital can be stressful.

**If you have any questions at all, please ask.**

TLB Interiors

---

Bedroom Mood Boards

(2020-2021)

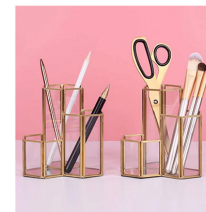
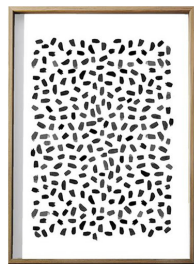
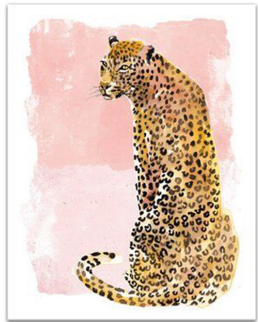
interior design | graphic design





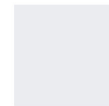
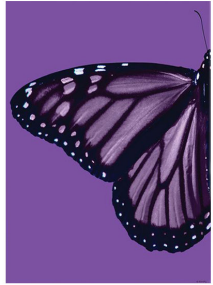


TAMERA'S BEDROOM





## AMBER'S BEDROOM

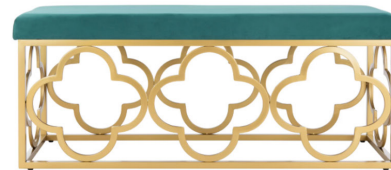






# TLB Interiors | Mood Board

## CAROLYN'S BEDROOM



tlb  
INTERIORS

K H R



# Generate Followers

---

(Spring + Summer 2018)

re-branding | graphic design  
social media content creation





Generate Followers | Logo Design



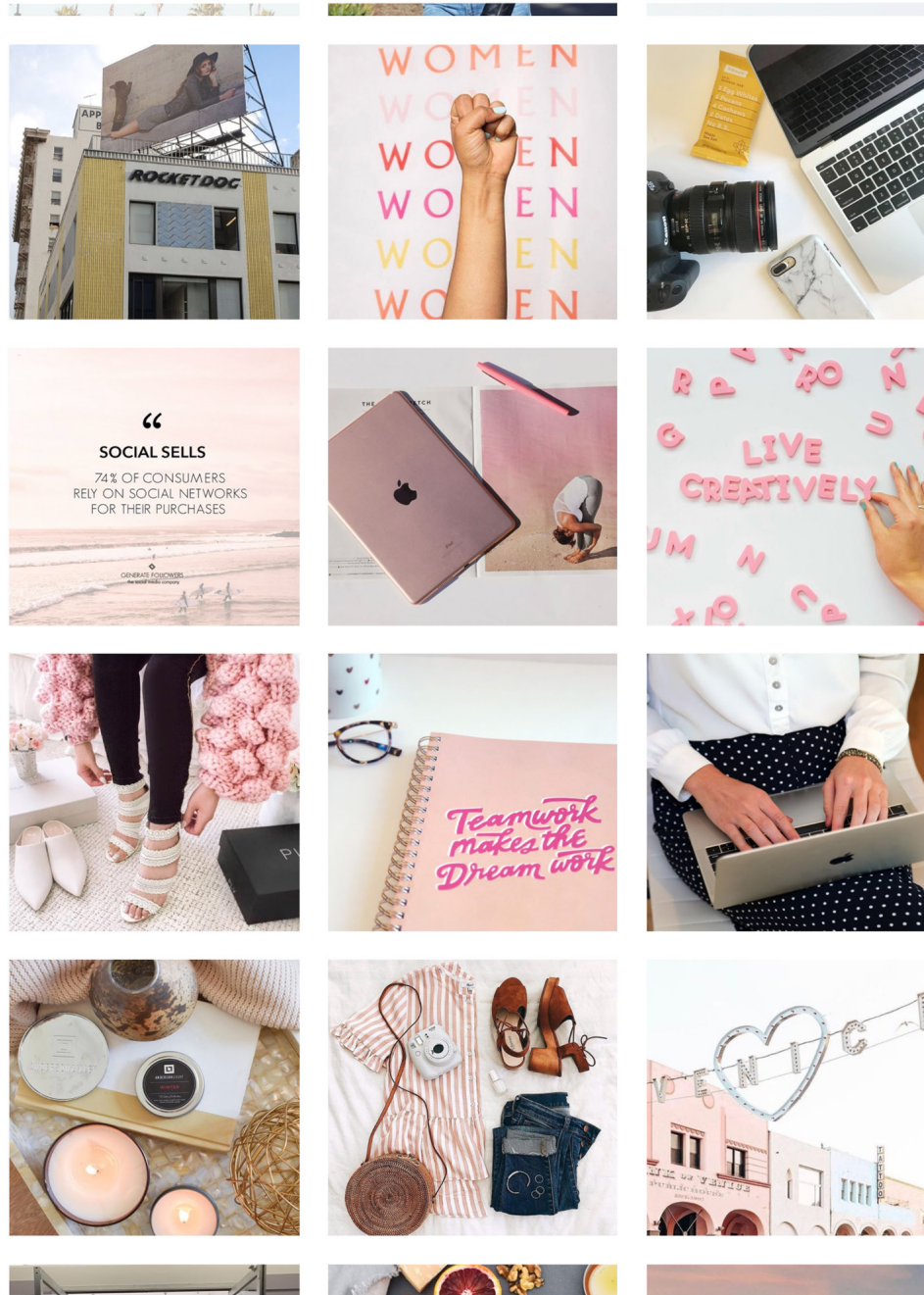
**GENERATE FOLLOWERS**  
THE SOCIAL MEDIA COMPANY

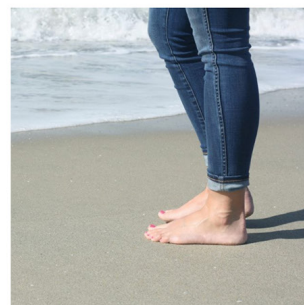
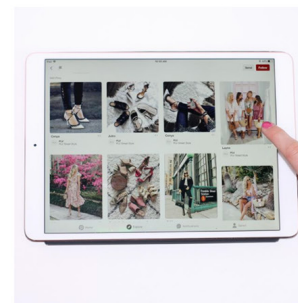
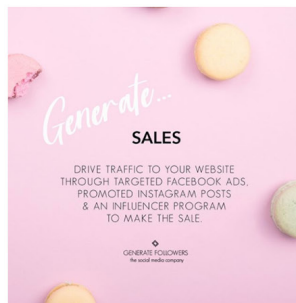


**GENERATE FOLLOWERS**  
THE SOCIAL MEDIA COMPANY

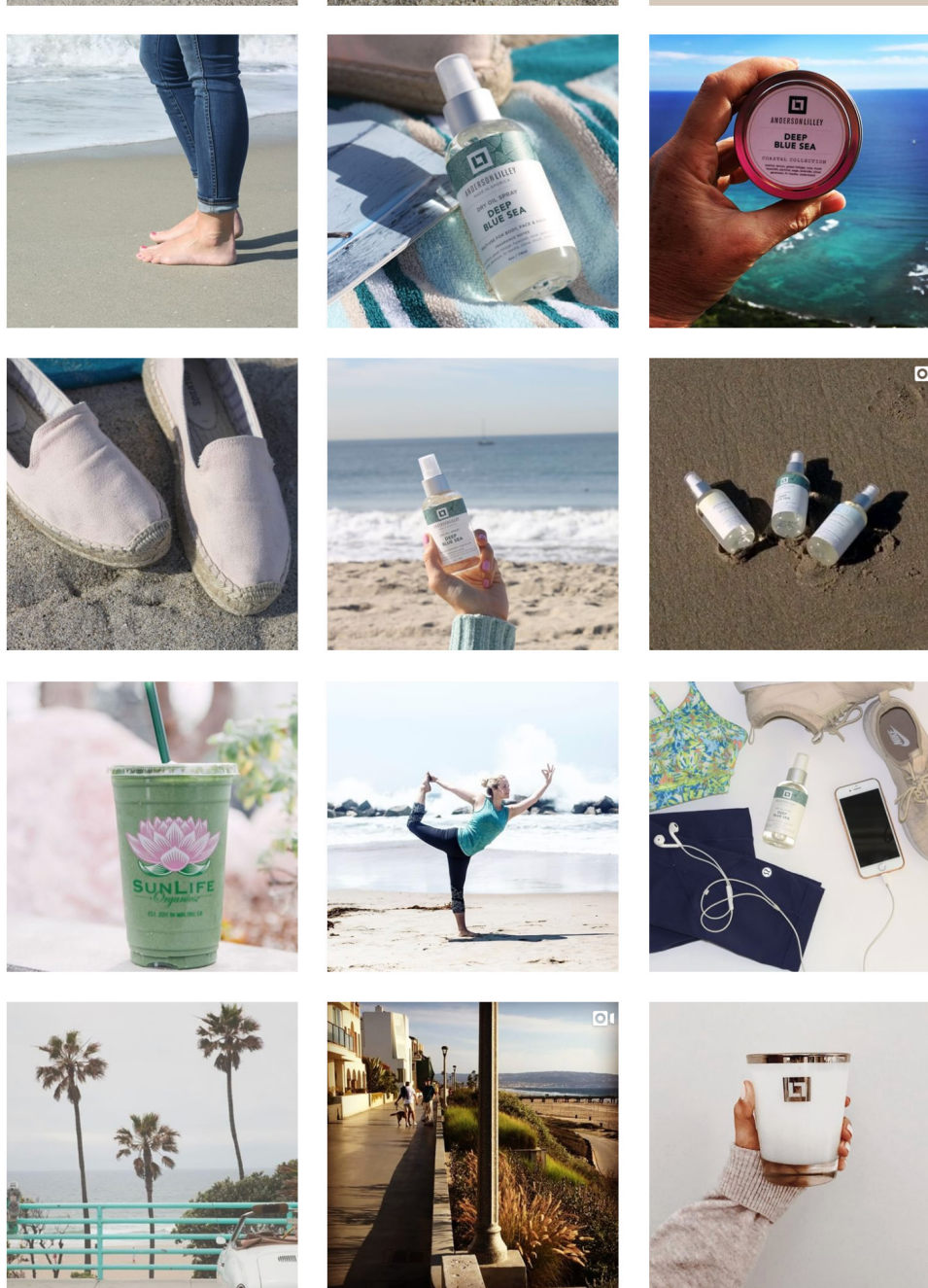


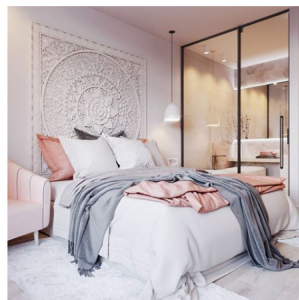
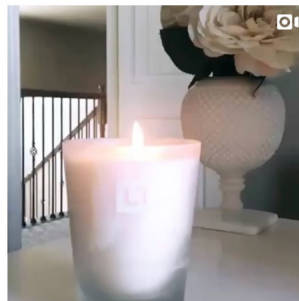
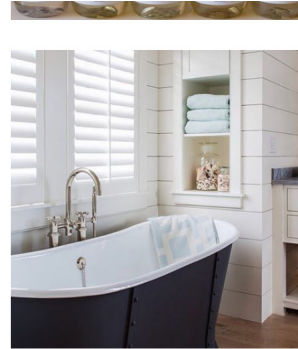
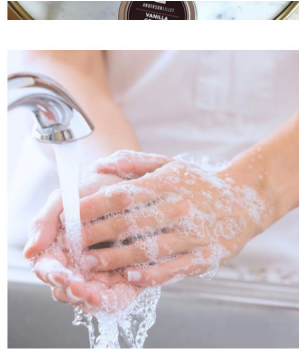
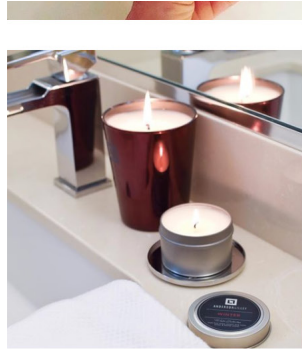
**GENERATE FOLLOWERS**  
THE SOCIAL MEDIA COMPANY



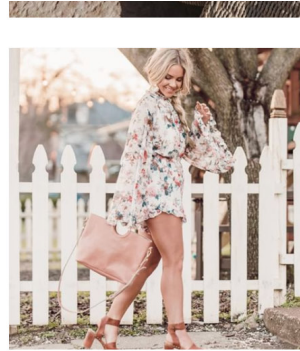
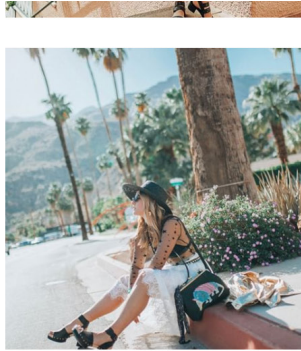
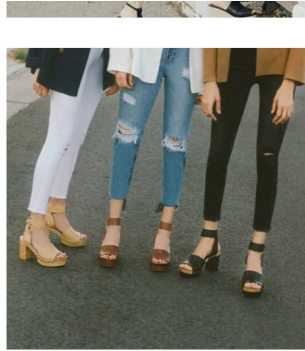






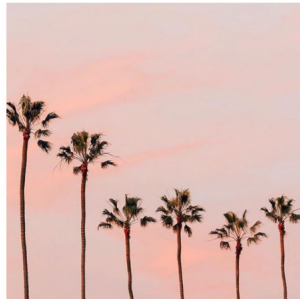
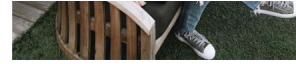


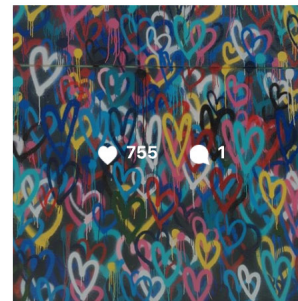
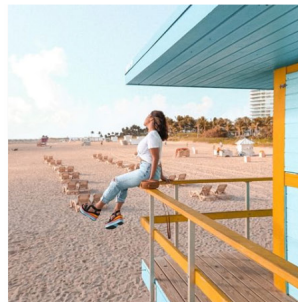
















## Generate Followers | Client Deck (excerpts)





## OUR WHY

---

There are more than 3 billion  
social media users worldwide.  
We insert your brand in the conversation.

Strategic social media enables brands to reach a larger number of people more affordably than traditional marketing and delivers measurable results, including:

MORE CUSTOMERS

MORE LOYALTY

MORE TRAFFIC

MORE SALES



GENERATE FOLLOWERS  
THE SOCIAL MEDIA COMPANY





## Generate Followers | Client Deck (excerpts)

### CLIENTELE | Our happy clients include:

---

**TV LAND**

**TRUE RELIGION**

**ticketmaster**

**LIVE NATION**

**GEORGE LOPEZ**



**BEACHBODY**

**KELSI DAGGER**  
BROOKLYN



**thestudio(mdr)**



**Beanfields**  
BEAN CHIPS

**POUR LA VICTOIRE**



### What our clients think

---

Generate Followers has effectively led the charge to launch a number of successful tours.

Timothy Carr, Live Nation

We've worked with other providers and Generate Followers social media ads always outperform anyone else's.

Jonathan Khorsandi, Renaissance Periodization



Generate Followers | Client Deck (excerpts)



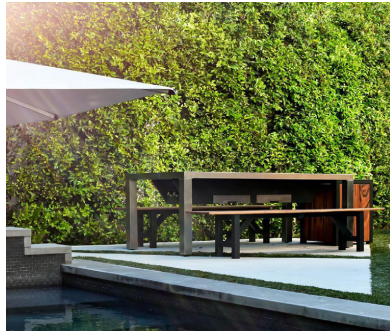
SOCIAL MEDIA MARKETING

SERVICES





## Generate Followers | Client Deck (excerpts)



We create  
custom content,  
tailored to your brand.



andersonlilley • [Follow](#)

andersonlilley Every coffee table needs a  
candle, or a few ❤️



734 likes

JANUARY 18

HOME & BEAUTY





## Generate Followers | Client Deck (excerpts)

Visual content  
is 40x more likely  
to get shared.



**kelsidaggerbrooklyn** • Follow  
Brooklyn, New York

**kelsidaggerbrooklyn** Switch up your loafer  
look with a stacked leather footbed

[View all 32 comments](#)

**pariahsauce** [@\\_amandadames\\_](#) those are  
very you.

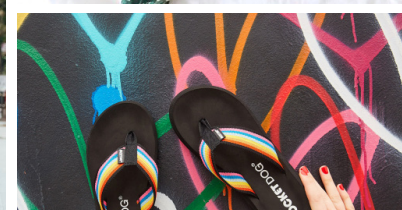
**kayteedesignco** Sooo cute



**1,878 likes**

SEPTEMBER 4

FASHION





## Generate Followers | Client Deck (excerpts)



Visual information  
is processed 60%  
faster than text.



**beanfieldssnacks** • Follow  
Los Angeles, California

**beanfieldssnacks** Today's plans: a bowl of guacamole & a bag of [#Beanfields](#) (consumed by me, myself & I)

**boujeevegangel** Craving some now 😍😋😭

**ryankburton** Yes please!!!



693 likes

JANUARY 22

FOOD & DRINK

thank you.

[krhanover@gmail.com](mailto:krhanover@gmail.com)



[katherinehanover.com](http://katherinehanover.com)